

CHEWTONGLEN  
HAMPSHIRE

# CORPORATE EVENTS

REFRESH, RESTART, REWARD



[www.chewtonglen.com](http://www.chewtonglen.com)

# CONTENTS

Sporting Life	4-5	Dance and Dine	32-33
Ultimate Lawn Games	6-7	Speaking of Which	34-35
Sheep Show	8-9	Pamper	36-37
Up Your Game	10-11	Wellness	38-39
Motorised Mayhem	12-13	Brewery	40-41
The New Forest	14-15	Food for Thought	42-45
The Sea	16-17	Corporate Events in The Kitchen	46-47
Best of the Forest and The Solent	18-19	Nearby Venues	48-49
Explore The Solent	20-21	Truly Gifted	50
Team Building	22-27	To Book	51
Giving Back	28-31		

**CHEWTON GLEN**  
HAMPSHIRE

## *Land*

Situated in 130 acres of immaculately maintained woodland and parkland, Chewton Glen is ideally placed on the edge of the New Forest, just minutes from the sea. There is ample space for a variety of team activities on the hotel's sweeping grounds, and guests can also enjoy a wide range of unique land-based activities in the beautiful local environs.



## The sporting life

Set in Chewton Glen's attractive grounds, a myriad of sporting pursuits can be tailored to suit your time and budget; any one of them will make an entertaining stand-alone activity or can be combined with others for an exciting multi-layered event. Perfect for client entertainment or simply spending time with colleagues, the activities can be offered in a half-day format or for just an hour to enhance your programme.

### ACTIVITIES AVAILABLE

- Archery
- Axe Throwing
- Black Powder Shooting
- Clay Pigeon Shooting
- Crossbow
- Duck Herding
- Falconry
- Ferret Racing
- Gun Dog Handling
- Off-road Buggies
- Segways



**Croquet:** quintessentially English, seemingly genteel, but in fact, great fun and very engaging and tactical, if not outrightly vicious!

**Petanque:** let everyone show their flair, feel French for a while; black and silver metal boules are provided so everyone feels part of an équipe.

**Quoits:** really quite British - but forget the Scottish/Welsh long game and the Northern or East Anglian game, and play this version with both stakes and target circles...

**Quornhole:** adapted from the popular US Cornhole game, players take turns to throw bags of 'corn kernels' at a raised board with a hole in the far end.

**Equipment:** forget cheap garden centre sets and expect quality equipment from leading manufacturers in their field - proper Jaques croquet mallets and balls, the right weight and diameter of petanque boules, steel-reinforced British rope quoits, and full-size cornhole boards made to US specifications. Each game has been adapted for both 2-a-side and 3-a-side so that with all 4 games and 2 games coaches included, a group of between 16 and 24 people can play at the same time, or if only 2 games are chosen, between 8 and 12 people.



## Ultimate lawn games

Lawn games have long been an English tradition. To give them a new and international spin, we've created an event that is both competitive and great fun. With expert coaching on the hotel's garden lawn our Ultimate Lawn Games are ideal for either team-building or as an ice-breaker with drinks before dinner.

## Sheep show

Definitely an event ewe will not forget, the Chewton Glen Sheep Show is a humorous, educational and entertaining event featuring the hotel's flock of handsome Rylands including Hershey, Blue, Barney, Twix and Finn, and their loveable Swiss Valais Black Nose companions, Toby, Ronnie & Heidi.

You will first learn about each breed's attributes and how wool from the sheep's back becomes a jumper to wear. You will then have the chance to get up close and personal with one of the flock in preparation for a sheep show competition. You'll need to get your sheep looking its best to impress before entering the show ring where your presentation will be judged against the other woolly competitors and their handlers.

The excitement and hilarity will mount as you extol your charge's finer attributes in the hope of winning the top prize!





## Up your game

A beautifully maintained executive golf course, tennis courts, and one of the best croquet lawns of any hotel in the country offer superb opportunities for group tuition and competitive events that are entertaining and exceptionally good value.



### GOLF

Innovative golf programmes at Chewton Glen are suited to any level of player and will cater for each individual's needs. Enjoy dedicated instruction and group coaching in all areas of the short game by experienced pros on the hotel's attractive 9-hole, par 3 course. Full video and Trackman swing analysis are also available.



### TENNIS

Chewton Glen's Tennis Centre features two indoor and two outdoor all-weather courts. Group clinics can be arranged with the hotel's resident pro and former county champion Matthew Salisbury and can be tailored to any level of experience and skill.



### CROQUET

Quintessentially English and seemingly genteel, croquet is in fact extremely competitive and great fun. With expert tuition on Chewton's full-size lawn, a croquet masterclass or tournament is an ideal addition to any event, either for team-building or as an ice-breaker with drinks before dinner. Men and women compete on level terms and physical prowess is not required, so everyone can join in.



## Motorised mayhem

Motorised events at Chewton Glen are suitable for all fitness levels and are guaranteed to get everyone's adrenaline pumping with off-road buggies, quad bikes, Argo cats, Segways, and even blindfold driving and reverse-steer driving options to choose from. With 0-60mph acceleration in under 4 seconds and 750ccs of unrestricted power, guests will be thrilled by the performance of the off-road buggies on the hotel's grounds. Ever fancied mastering your driving technique with no steering wheel? Argo Cats are 6-wheel all-terrain vehicles controlled with two

levers – one for each side – making them the most unusual driving experience you are ever likely to have. Segways are easy to ride but much harder to master; an ingenious course will test your precision driving skills once you have learnt the basics. Blindfold driving and reverse Steer are baffling challenges you will find harder to master than you think. The sensory deprivation when blindfolded requires you to trust your team. Reverse steer will literally turn your mind inside out.



## THE ITALIAN JOB

In this fast-paced treasure hunt on wheels the group will be briefed on the challenge ahead and then split into teams of four. Provided with the keys to their own Mini Cooper, and a briefcase containing a Nexus 7 tablet with built-in GPS and a cache of cryptic clues, each team will set off on a mission of daring and intrigue, encountering some 'dangerous' characters along the way. Intelligence, creativity and teamwork are required in order to complete as many challenges as possible and pull off the ultimate 'job'! Teams will literally 'blow the bloody doors off' to get to the gold at the conclusion of this high-energy, laugh-out-loud event.



## SEGWAY ADVENTURE

A Segway personal transporter is a clever self-balancing machine controlled by a rider's movements making it easy to operate and master. A Segway experience is unique and thrilling, and the machine's ability to turn on a sixpence guarantees an exciting ride. After a quick briefing you will be equipped with essential safety gear for your Segway experience. Once you have completed a few short games to build up your confidence, you will be unleashed to practice your new-found skills and speed through a variety of obstacles set out on the hotel's grounds. Segways make for an excellent stand-alone activity and are also perfect to go alongside a range of country sports.



## SUPERCARS

Chewton Glen can offer you the luxury and status of a range of the world's top supercars including the Lamborghini Huracan Spyder, Ferrari 458 Spider, Aston Martin V12 Vantage, Lamborghini LP570 Performante, Ferrari California, Bentley GTC V8, Mercedes GT AMG, Maserati GranCabrio Sport and Range Rover Vogue Autobiography, to name but a few! Enjoy the thrill of driving your chosen supercar, either on a pre-selected route or to a destination of your choice. Packages range from short driving experiences to full day excursions tailored to your preferences.



# The New Forest

Wild ponies won't be able to drag you away from the New Forest once you've experienced the beauty and peace of its idyllic glades, ancient woodland, open moors and heathland. Once a royal hunting ground for King

William I and his noblemen in 12th century AD, this 150 square mile area of historic countryside has now been voted the No. 1 National Park in Europe in the 2022 TripAdvisor Travellers' Choice Awards for Destinations.

## BICYCLE SAFARI

With its quiet country lanes, dedicated cycle tracks, woodland trails and picture-postcard villages, the New Forest is an ideal location for a cycle safari adventure. Teams will be provided with Nexus 7 tablets containing cryptic clues and challenges which can be tailored around your company or objectives. Clues must be pieced together to solve the final puzzle, and a 'real time' map showing the other teams' locations and a live scoreboard will keep the competition keen. To add to the fun for this team-building event, tandem bikes are also available.



## BESPOKE CYCLING DAYS

With its quiet country lanes, dedicated cycle tracks, woodland trails and picture-postcard villages, the New Forest is an ideal location for a group cycling event. This is a perfect opportunity to embrace the outdoors and enjoy this iconic landscape with a well-planned way-marked route customised to suit the group's interests and objectives either as a leisurely ride or a competitive challenge.



## CANOEING

Canoeing is a unique and wonderful way to see the beautiful Beaulieu River in the heart of the New Forest. Discover the sights and sounds of the nature reserve in comfortable 2 or 3-seater boats or paddle a stable single-seater on a two-hour guided tour exploring hidden creeks and inlets. You will feel safe and confident getting to grips with your paddle and learning some new skills, whilst discovering the history and traditions of this remarkable river.

## RAMBLE IN THE FOREST

A guided walk is one of the most pleasurable ways to explore the Forest's best-kept secrets and to enjoy the scenery, atmosphere and wildlife. You will get up close and personal with the many animals in the Forest and will experience the splendour of the heathland and moorland mix. Your expert guide will introduce you to the woodland flora and fauna, and you will learn about the history and ancient ways of the Forest, along with the modern requirements to sustain its heritage for many years to come.





# The sea

The Solent is a unique stretch of water (the busiest for boating in the UK) and an area steeped in history and natural beauty, with pretty fishing ports and islands,

and a wealth of activities in its many harbours and estuaries. Sheltered by the Isle of Wight, it is a perfect stage for a myriad of water-based activities and events.

## LAND, SEA & AIR

Offering the ultimate WOW factor this adrenalin-fuelled event combines high-speed powerboats, off-road driving and an unforgettable helicopter ride. It can be offered as pure entertainment, or an element of team-building can be added with a series of challenges woven into each segment of the day.



## RIB TREASURE HUNT

A treasure hunt with a twist: it's fast and it's wet! Groups travel on high-speed Rigid Inflatable Boats (RIBs) capable of speeds in excess of 50 mph in this high-adrenaline adventure. Using Nexus 7 Tablets, teamwork and lateral thinking to solve cryptic clues, participants will complete a challenging scavenger hunt and photo mission finding secret locations on the beautiful Solent.



## SAILING REGATTA

An exciting and aspirational event, sailing days are designed to give guests the thrill of taking part in a regatta and are suitable for all abilities and levels of experience. It requires communication and cooperation to achieve a common goal: if the team doesn't work together and communicate effectively, the boat simply won't sail. Racing with a fully-qualified skipper and mate on identically matched yachts will ensure that participants get the maximum enjoyment from the experience.



## LUXURY POWERBOAT OR YACHT CHARTER

Chewton Glen is only 15 minutes door to shore, and what better way to entertain your colleagues or clients than on board a fantastic Sunseeker powerboat or luxury yacht. The hotel's chefs can provide a sumptuous hamper which your attentive crew will serve with chilled champagne whilst you sit back, relax and enjoy the stunning views of The Solent.



# Best of the forest and the solent

The beautiful New Forest National Park and the glorious waters of the Solent combine to present the perfect adventure; an opportunity to absorb the area's fascinating history, embrace the great outdoors and escape from the digital world. You will enjoy a guided tour of the Forest, on foot, by bike or by car, followed by an adrenaline-fuelled blast on a Rigid Inflatable

Boat across the Solent. The RIB will allow you to get up close to historic locations such as Hurst Castle and The Needles, with the Isle of Wight as a stunning backdrop. To finish off the day you will enjoy a sundowner and stunning views at a neighbouring cliff top bar before returning to Chewton Glen.



## GARDEN TOUR

Enjoy an insider's look into the on-going development of the hotel's extensive eco-friendly estate. Chewton Glen's crack team of gardeners work year-round sowing seeds and potting up, and a fabulous array of vegetables, fruits, herbs and edible flowers is harvested from the walled kitchen garden and nursery. The hotel also has more than 50 working hives of very well-behaved bees, cared for by Bee Keeper Rob Oliver and estate Manager Darren Venables.



## POWER WALK TO THE SEA

A bunny is a local name of unknown origin for a valley, equivalent to a chine in Dorset or glen in Scotland. An escorted 'power walk' from the hotel down Chewton bunny to the sea will give guests the chance to enjoy the spectacular views across the Solent to the nearby Isle of Wight. This is an ideal way to clear the cobwebs before a morning meeting, or as a quick refresher after lunch.



# Explore the solent

## NEW FOREST PADDLE BOARD AND KAYAK

Embark on a fabulous adventure along the New Forest's stunning coastline on a paddle board or in a kayak. On your paddle board explore a Tudor castle while enjoying views across the Solent to the Isle of Wight and the beautiful salt marshes, or enjoy the novel experience of water-based yoga, freeing yourself from all distractions whilst gently rocking amidst the sounds of nature. If you embark on a kayak adventure choose between the shelter of picturesque Lymington harbour or the wilder waters of the Solent. Professional instructors will help you read the sea conditions, plan your course, and launch you safely in the waves.

FOR A TRULY MEMORABLE DAY ENJOY BESPOKE HOSPITALITY AT ONE OF THESE WORLD-RENOWNED EVENTS:



## ROUND THE ISLAND RACE JUNE/JULY

With over 2000 yachts taking part, the Round the Island Race is one of the world's most famous and spectacular sailing races and has taken place on the Solent every year since 1931. The race is a complete circumnavigation of the Isle of Wight starting from the Royal Yacht Squadron, just off Cowes.



## COWES WEEK AUGUST

Corporate hospitality at its finest. Entertain your clients or team onboard a luxury sailing or motor yacht taking in the colourful atmosphere of one of the largest and most prestigious sailing events in the world. If you'd prefer a more hands-on experience, take on the pros with your own racing yacht and professional crew.



## Team building: get creative

Chewton Glen is the perfect location to reconnect with your colleagues. The hotel offers an array of indoor and outdoor team building activities, which encourage communication and the art of working together as a cohesive team.



### THE BIGGER PICTURE

Many artists are drawn to the beauty of the New Forest and the drama of the South Coast for their inspiration. You can enjoy a similar opportunity to capture the local scenery in art with an exclusive drawing class led by an expert professional offering tuition suited to all abilities. In a small informal group, participants will sketch views from the hotel's exquisitely landscaped grounds or at the nearby beach with views of the Solent and Isle of Wight. If the weather is less kind, the class can be arranged to focus on interior scenes. You will leave with your completed drawing as a memento of your stay.

### THE SWEET SMELL OF SUCCESS

With a host of celebrities creating signature fragrances, why shouldn't you do the same? Learn to identify and understand the properties of a range of exquisite essential oils sourced from the world's finest ingredients. Choose your favourite tones and then master the process of designing your own personal fragrance. As a memento of the session you will be presented with your perfume in a beautiful atomizer. This unique and creative event can be presented either as an individual experience, or as a half or full day team building 'Apprentice' style challenge.

### HATS ENTERTAINMENT!

You will have the opportunity to learn the delicate art of making stunning hats and fascinators with a multi-award-winning milliner. Benefiting from expert advice and the finest materials, create an exquisite and original headpiece worthy of Mr Selfridge which you will cherish for many years. You will be served delicate light bites and the finest teas presented on antique tea sets whilst you relax, build relationships and get creative.



## SONGDIVISION

### “Come Together”

Follow in the footsteps of musical icons like The Beatles as you and your colleagues come together in an interactive musical experience delivered by the one and only SongDivision. Unite around your purpose as you write and record an original song with renowned UK musicians who perform with Florence & the Machine, Michael Bublé, The Killers, Jason Derulo, and more! For your evening celebrations, Song Division’s musicians can transition seamlessly into a party band for your gala awards to provide a live soundtrack for your presentations and ceremonies before performing hits from the past four decades. Other interactive elements can be added, such as Live Band Karaoke, Lip Sync Battles, and a Rock & Roll Game Show.

For those seeking a more socially-distanced solution, all of SongDivision’s programmes are fully adaptable to the virtual space should you wish to host a hybrid or virtual experience from the comfort of your Iconic accommodation.



## FLOWER POWER

A floristry workshop is a relaxed and rewarding activity allowing guests to demonstrate their artistic flair and creativity, whilst enjoying a sense of wellbeing. Led by a Chelsea Flower Show award-winning floral designer, participants will learn how to create hand-tied bouquets, seasonal wreaths or floral table settings for special occasions.

The workshop can be run as a fun have-a-go event, or as a competition with prizes awarded to the winning team or participant. Guests can either take away their arrangements as a memento, or donate their creations to a local hospice or charity.



## TERRARIUM WORKSHOP

In this hands-on workshop you will make your own terrarium. You will learn how these self-contained ecosystems work, why they survive so well on their own, and how to look after them. A short introduction will explain the history and science that goes into building a terrarium, including the different plants you can use and why activated charcoal is essential. After a quick demonstration, it is up to you to get your hands in there and build your own terrarium to take home and enjoy for years to come.



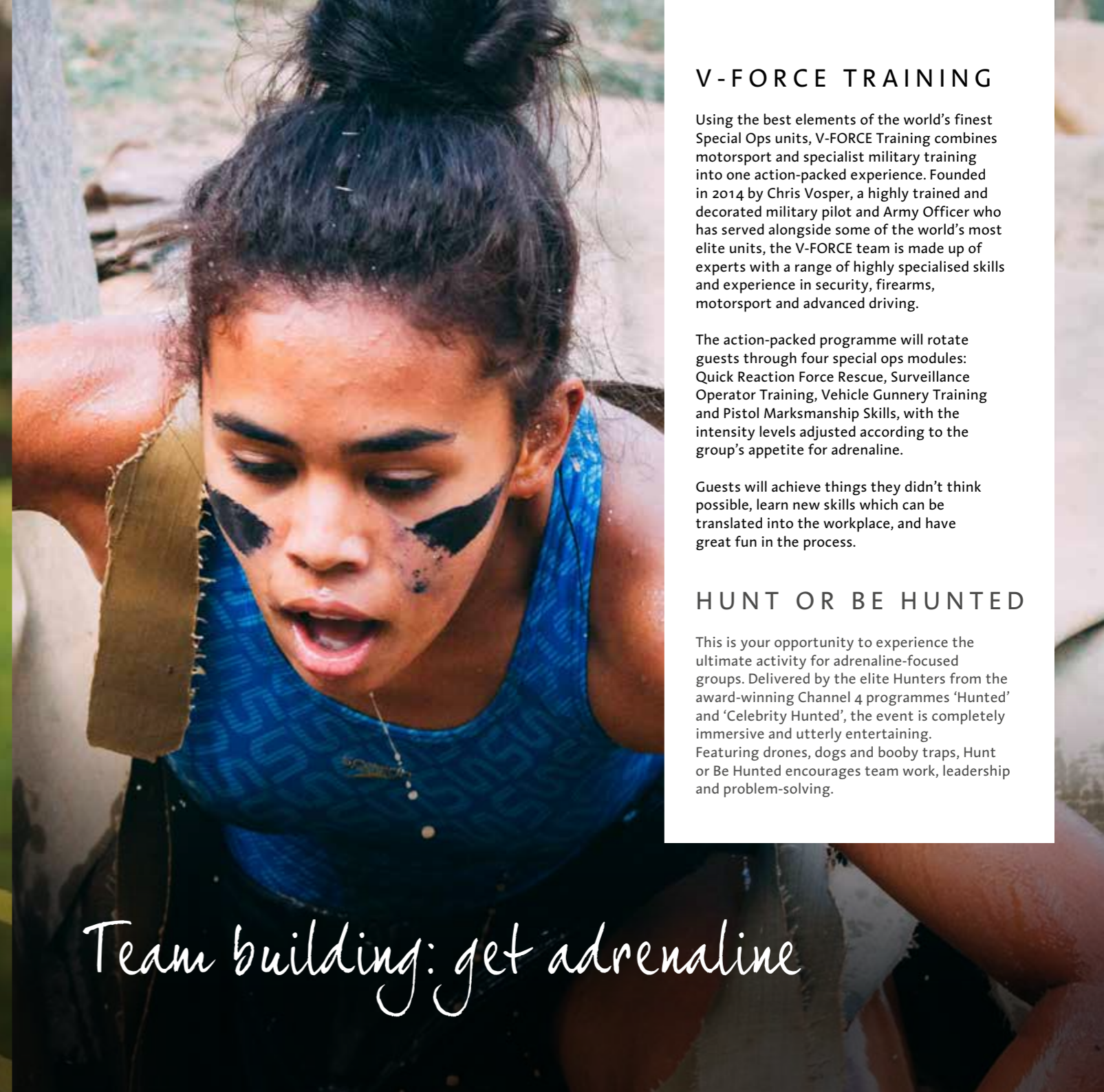
## QUBED

Hosted by a professional challenge master, teams will enter a themed arena of unique head-to-head challenges. Participants will need to pit their wits and skills against the nail-biting tasks to earn rolling points, all with the added pressure of a ticking clock. Nerve, determination and skill are all required to complete the tasks and score points in this exhilarating team building experience.

## CRYSTAL CHALLENGE

A firm favourite with an array of cunning challenges that can be arranged in or outdoors. Embracing the classic TV shows 'The Krypton Factor' and 'The Crystal Maze', this event is a combination of both concepts, giving your guests an exceptional team building experience. Each team faces a series of challenges suitable for participants of all ages and abilities that will test their cerebral skills and challenge them to organise the most effective team solution to each problem.

*Team building: get thinking*



## V-FORCE TRAINING

Using the best elements of the world's finest Special Ops units, V-FORCE Training combines motorsport and specialist military training into one action-packed experience. Founded in 2014 by Chris Vosper, a highly trained and decorated military pilot and Army Officer who has served alongside some of the world's most elite units, the V-FORCE team is made up of experts with a range of highly specialised skills and experience in security, firearms, motorsport and advanced driving.

The action-packed programme will rotate guests through four special ops modules: Quick Reaction Force Rescue, Surveillance Operator Training, Vehicle Gunnery Training and Pistol Marksmanship Skills, with the intensity levels adjusted according to the group's appetite for adrenaline.

Guests will achieve things they didn't think possible, learn new skills which can be translated into the workplace, and have great fun in the process.

## HUNT OR BE HUNTED

This is your opportunity to experience the ultimate activity for adrenaline-focused groups. Delivered by the elite Hunters from the award-winning Channel 4 programmes 'Hunted' and 'Celebrity Hunted', the event is completely immersive and utterly entertaining. Featuring drones, dogs and booby traps, Hunt or Be Hunted encourages team work, leadership and problem-solving.

*Team building: get adrenaline*

DO SOMETHING GREAT

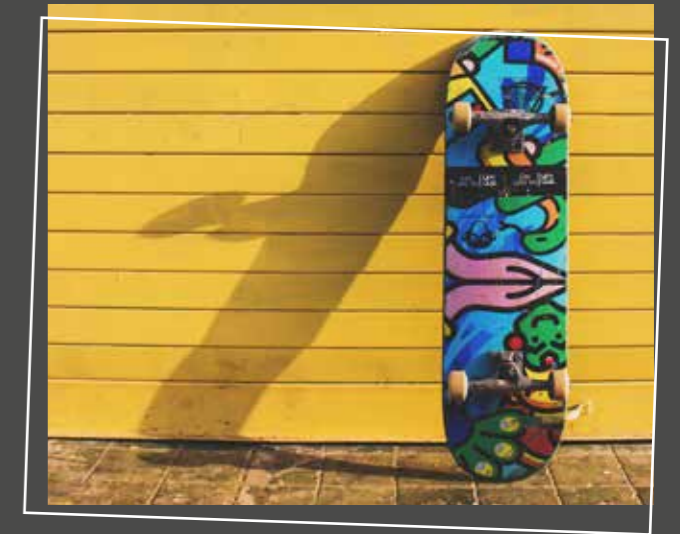
## Giving back: team building with a purpose

People love to do things that matter, and companies that encourage employees to take time to participate in events which give back to the community create a caring and fulfilling culture back in the workplace. You can organise a great team activity with a purpose, and harness the energy and investment expended to deliver added value for your company and your participants. The following activities are both entertaining and empowering and in most cases can be run indoors and out.



### BIKE BUILD

This 2.5 hour challenge kicks off with a briefing and presentation from the chosen charity. Participants will learn how the bikes will be used creating a strong incentive and emotional bond for the group. Teams of 5-8 guests will each be allocated a professional workshop with all the tools and equipment required to build one bike, but before they can start one member of the team has to get The Knowledge. The Knowledge session provides the designated individuals with the skills required to build the bike which they then share with the rest of their team before coming up with a plan. 'Curve balls' will be thrown at them along the way: insufficient budget, missing parts and other challenges to overcome. Teams may need to collaborate to ensure that their bike is built on budget, and on time!



### ON BOARD

This 2-hour challenge combines a mixture of street cred, art, and common sense as team members work together to create a unique masterpiece on a skateboard. A briefing and presentation about the charity project that will receive the finished boards will create an emotional bond which helps focus the teams and makes their efforts worthwhile; each team of 7 participants will build two skateboards. The teams will need to allocate roles including Yuda - responsible for overall project management and collating feedback; Banksies - tasked with interpretation of the brief and ensuring the deck meets the design requirements; Elons - in charge of manufacture; and Hiroshiges - meeting the strict safety guidelines. The teams will be provided with a brief including style, colour and theme. They will have to browse the shop to see what they can obtain and then take on challenges to gain the items they need. Once the teams have everything they need they can assemble and decorate their boards before presenting them to the whole group to demonstrate how they have fully met the brief. And, of course, at the end, the newly-built boards will be presented to the charity's representative.



## CONSERVATIONIST FOR A DAY

Walking in the New Forest is an excellent way to enjoy the scenery, atmosphere and animals of this 100,000 acre National Park. In conjunction with the National Park Service we can arrange for your group to work alongside a Park Ranger. You will get up close and personal with the vast array of wildlife across the forest and experience the splendour of the heathland and moorland mix, whilst assisting with a specific restoration project: fence repairing, gorse burning or protecting the native rhododendrons. Provided with Chewton Glen picnic hampers and wellies, you will learn about the ancient ways of the forest and the modern practices necessary to sustain the heritage for many hundreds of years to come.



## FUN HOUSE

Working in groups of 8-10, teams need to build, paint and decorate their own playhouse. All the parts, paints and materials required to complete the activity are included, along with a helpful support crew. Each team starts with similar resources, tools and equipment, including money and a basic flat-packed Fun House kit. Teams can purchase additional kit, tools and decorating items in order to complete their creation. When finished the Fun Houses will be delivered to a deserving charity such as the NSPCC's Neglect programme or to a specific charity of your choosing.

## PERFORMANCE WHEELCHAIR CHALLENGE

Working in groups of up to 10, teams will build a sports wheelchair. Each team will be provided with a chassis and some simple instructions. Team members must then acquire the additional parts needed to complete their wheelchair by taking part in Crystal Maze-style challenges. They will also have to negotiate with the technicians if they need any assistance with the assembly. When all the sports wheelchairs are finally assembled, the teams will face each other in a high-stakes race, or compete in a wheelchair basketball match. At the end of the event the sports wheelchairs will be donated to an all-ability sports club or an Armed Forces charity.

# HospitaliTEA

Combine the fun of baking with the enjoyment and fulfilment of helping to make a real difference to the lives of older people; working in conjunction with a local care home, your group will be challenged to create a tea party for a small group of elderly residents. The day starts when the group meet their Chef Tutor at the Kitchen Cookery School - participants will learn how to mix, bake, slice & dice their way to create a fabulous treat in the great tradition of the hotel's famed Captain Marryat Afternoon Tea. Later that day, participants will host their older guests in a stylish private dining room with whom they will share the fruits of their labours and make a toast to friendship and fun with a celebratory glass of fizz.



## COOKING WITH A CONSCIENCE

The perfect cookery event to help feed your body and spirit offers an opportunity for teams to enjoy an inspiring class in Chewton Glen's Kitchen Cookery School where they will create delicious dishes in double portions, donating half to those in need. During the cookery workshop participants will learn new skills under the guidance of the Chef Tutor and prepare a nutritious and tasty meal, half of which will then be vacuum-sealed and distributed to a local homeless charity in Bournemouth. It's a fun, hands-on day for you and your team enabling you to bond with a truly purposeful outcome.

## SONGHAVEN

A not-for-profit Community Interest Company, Songhaven's highly accomplished, classically trained artists are guaranteed to bring the thrill of professional music-making to your event. From surprise pop-up performances to formal gala concerts and staged opera scenes, a Songhaven performance will be tailored specifically to ensure maximum audience engagement and connection. The repertoire can include popular tunes, classic musical theatre, as well as operatic and classical pieces - all delivered in a fun, down-to-earth manner with humour, glitz and glamour. By choosing Songhaven you will be supporting their acclaimed dementia-friendly concert series and online concert films - which bring the joy, dignity, and comfort of great music to older people, carers, and people living with dementia.



# Dance and dine

## CHEWTON COMES DANCING

Guests will enjoy an event that's 'strictly' fun with their own 'Come Dancing' performance. Pavilion Dance South West is a registered charity dedicated to transforming communities through dance - they support programmes which include sessions for people managing health conditions such as Dementia or Parkinson's, and young people living with mental health issues. Under the expert tutelage of the charity's professional dancers, each team will be taught the different steps they will need to perform. Once the dancers have mastered the moves, their performance will start to take shape. The event concludes with the teams demonstrating what they have learned and doing their best to wow the expert judges! Chewton Comes Dancing is a great way to build teams, cultivate some new-found skills and have great fun whilst doing something amazing for a worthy cause.



## FIRE & FIZZ

Enjoy a truly unique dining experience with an al fresco lunch or dinner, featuring fresh wood-fired pizzas in Chewton Glen's stunning walled kitchen garden, accompanied by a selection of the top Champagnes served from the fabulous Champagne Fire Truck. Dating back to 1972, the British Leyland AEC fire engine has been lovingly restored to retain many original features, granting it a new lease of life as a high-end Champagne bar. With original working sirens, blue lights, chrome detailing and iconic red paintwork, the Champagne Fire Truck retains its original character, yet with a quirky twist! The side lockers, once home to hose reels and kit, now house fridges brimming with Champagne. A stunning bar, constructed from authentic French riddling racks is topped with a section of the fire truck's original water tank, while a gazebo with a ladder frame and striking red canopy offers shelter from the elements. You'll have an opportunity to experience different styles of fizz, learning the best way to taste the intricate flavours. You'll also get buying tips, serving techniques and you will learn some fascinating facts from the experts. Representatives from Hampshire & Isle of Wight Fire and Rescue will also be on hand and a donation will be made to the Firefighters Charity to support the health and wellbeing of our fire service personnel, past, present and future.





## Speaking of which...

Key themes of 'Englishness' are brought vividly to life by three very special friends of Chewton Glen. As speakers for larger groups or welcome guests at more intimate gatherings, these three insiders offer fascinating insights into the social history and evolution of the English country house as a political power house, as well as into the spirit of discovery and adventure that has been associated with England for centuries.



### MANLEY HOPKINSON

An officer in the Royal Navy, Inspector in the Royal Hong Kong Marines, skipper in the BT Global Challenge and leader of a 3-man team that won the inaugural race to the Magnetic North Pole, Manley brings the wealth of all these experiences to his talks which motivate and entertain audiences around the world. A local hero and Lymington resident, Manley uses professional quality video and pictures taken during the BT Global Challenge and The Polar Race to illustrate his inspiring presentations.



### JOHN ROWLAND

John Rowland is Managing Director of the multi award-winning political consultancy Cicero. John is a political consultant and analyst with a decade of experience working in London and Washington, D.C. He advises major clients in financial services, real estate and mining. John leads Cicero/AMO's political risk analysis and, having amassed a wealth of experience dealing with some of the most pressing political and economic challenges in Britain today, is a fascinating and intriguing speaker.



### JESSICA FELLOWES

Best known for her work as author of five official companion books to a certain hit television show, Downton Abbey, four of her books have made it into The New York Times bestseller lists, and she is in much demand as a speaker at events in the UK and US. As the niece of creator and scriptwriter Julian Fellowes, Jessica will share the identities of the real-life inspirations for the show, both historical characters and members of her extended family. As the former deputy editor of Country Life, Jessica also wrote the magazine's Townie's Guide to Country Weekends. The latter formed the basis of her first book, Mud & the City: Dos and Don'ts for Townies in the Country.



## Pamper

The sanctuary of the Spa at Chewton Glen offers the perfect antidote to today's increased stress levels. The hotel's extensive leisure facilities provide an optimal environment away from workplace distractions and pressures allowing guests to experience:

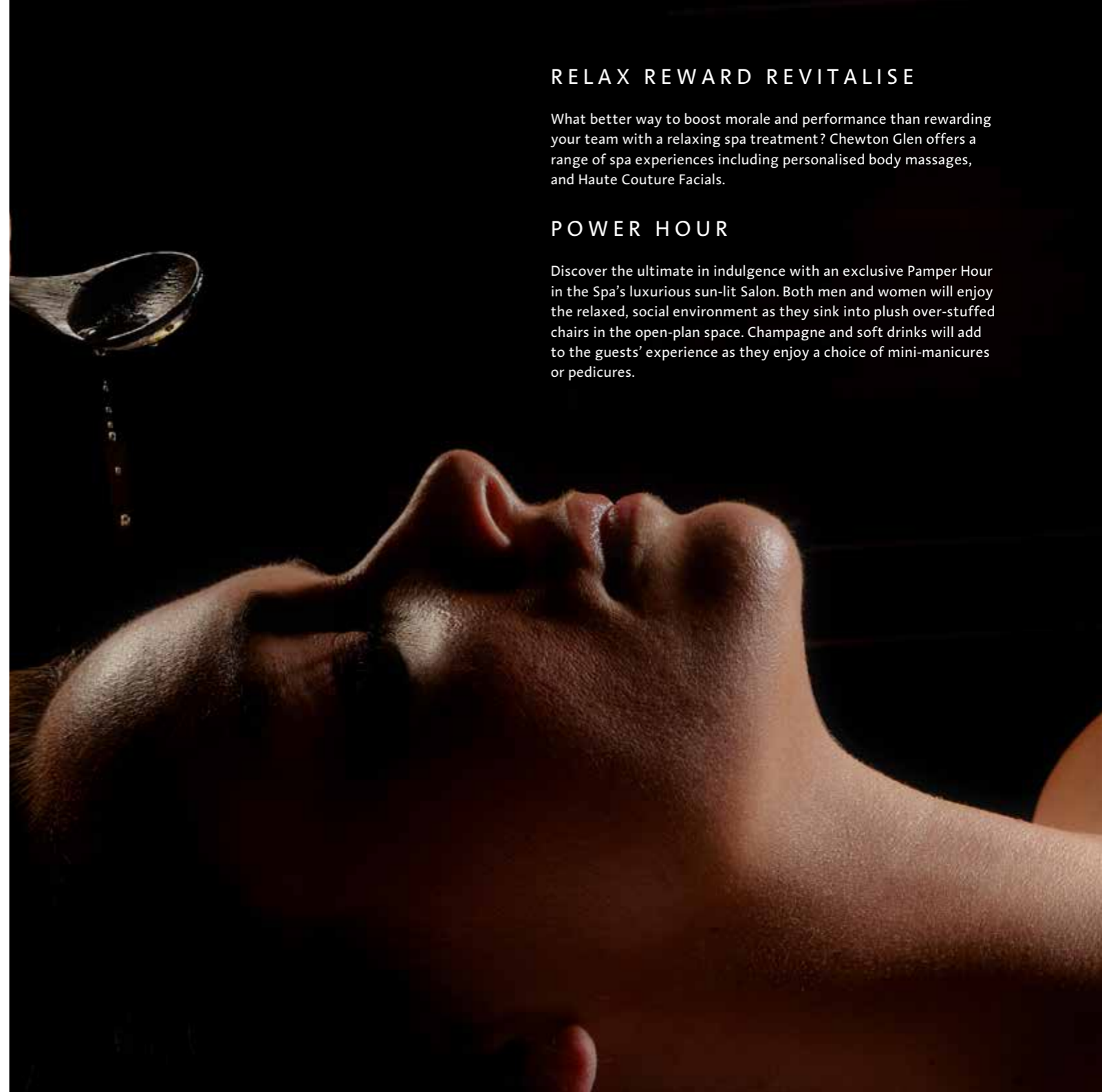
- 17-metre swimming pool
- Hydrotherapy spa pool with hi-tech therapy options
- Relaxation room
- Outdoor whirlpool
- Cold drench showers
- Crystal steam rooms
- Aromatherapy saunas
- State-of-the-art gymnasium

## RELAX REWARD REVITALISE

What better way to boost morale and performance than rewarding your team with a relaxing spa treatment? Chewton Glen offers a range of spa experiences including personalised body massages, and Haute Couture Facials.

## POWER HOUR

Discover the ultimate in indulgence with an exclusive Pamper Hour in the Spa's luxurious sun-lit Salon. Both men and women will enjoy the relaxed, social environment as they sink into plush over-stuffed chairs in the open-plan space. Champagne and soft drinks will add to the guests' experience as they enjoy a choice of mini-manicures or pedicures.





# Wellness

We currently live and work within challenging, fast-paced, busy and uncertain times and practicing mindfulness enables us to develop a new set of skills to stay steady in the midst of all this. Mindfulness is a way of training our minds to be in the present moment through mind body meditation practices, rather than dwelling in the past or being caught up in the future. Over time it becomes a way of life, enabling us how to be more compassionate towards ourselves and others. Cultivating mindfulness has been shown through quality research to be an investment in our physical and mental

wellbeing at home and at work, enabling the enhancement of wellness, joy, creativity and flourishing. Recent studies suggest that practicing mindfulness may shape the brain, developing areas important for focus, empathy, compassion and emotional regulation, along with decreasing areas responsible for fear and perceived stress.

We can offer anything from a one and a half-hour introductory session, to a half or full-day workshop and beyond, with prices starting from £250\*.



## GUIDED BEACH WALK

Only a stone's throw from the Jurassic South Coast, we are perfectly situated for a leisurely stroll to the beach. Join one of our knowledgeable spa team members for a break away from the hard work and enjoy a guided beach walk.

**£100 per hour.**

## YOGA

Yoga is an ancient form of exercise that focuses on strength, flexibility and breathing to boost physical and mental wellbeing. The main components of yoga are postures (a series of movements designed to increase strength and flexibility) and breathing. So step away from the meeting room and take time for yourself and your team.

**Relax with an hour of Yoga for £100.**

*Prices based on group sizes of 15.  
Supplements apply for larger groups.*



## Brewery

This activity offers participants the opportunity to explore the growing popularity of English craft beer with an expert guide taking you on an insiders' tour of one of the local region's best breweries. During a short transfer you will be entertained with fun facts and Q&A en route. On arrival, you will be allowed special access to the brewery, including many areas not normally open to visitors. You will learn what makes a great beer from the brewers themselves who will introduce you to the whole process from brewing to bottling. You will have the chance to taste the ingredients, as well as the finished product.

Your next stop will be the Saxon Bar, one of the area's finest craft beer establishments for a tutored tasting session after which you will receive a stylish 1/3 pint glass, a can of beer from the brewery and a 'Beeriodic Table' of beer styles.

Alternatively, a similar activity can be arranged featuring local ciders – and either experience can be followed with a specially paired dinner menu at Chewton Glen featuring a variety of brews.



# Food for Thought

## COMPETITIVE COCKTAILS

Chewton Glen is an ideal spot to try the intoxicating art of cocktail making under the watchful eye of our top bottle spinners. After an initial tutorial in blending, teams will compete to create the perfect tittle. Trickier than it sounds, each team must explain the inspiration behind their creation, the technical details of its blend, along with the alcoholic content of each cocktail.

## BRUSH & BUBBLES

A fun and interactive event perfect with pre-dinner fizz or as a post-meeting activity. No artistic experience is required; a local artist will guide your group as they create their own masterpieces in watercolours and ink. Guests will gain new skills and express themselves through art in a relaxed and comfortable setting.

## TREASURE OR TOSH?

Like 'Antiques Road Show' but with a twist. Guests will enter a room filled with a variety of collectables and will be challenged to determine which ones are valuable antiques and which are car boot classics. With items from the elegant to the bizarre, budding antique dealers will be encouraged to inspect each piece to estimate its value and guess its provenance. An expert will be on hand to confirm or refute the participants' assessments. It's a fun and sophisticated icebreaker and an ideal accompaniment to pre-dinner drinks.



## CROQUET

Croquet has long been a favourite English pastime. It's full of fun and scamper, yet not overly energetic, and a great way to mix and mingle. With the expert guidance of Chewton Glen's professional 'pro' on its iconic lawn, croquet is an ideal pre-lunch or dinner activity played ideally with Pimm's in one hand and mallet in the other.

## VINES OF PASSION

English wine is growing in popularity and England is increasingly recognised as a premium wine producing region, with more than 450 vineyards. English sparkling wine has been highly praised for its quality, beating champagne in major competitions. Chewton Glen is proud to have the largest list of English wines in the world. The hotel's Director of Wine, Francesco Gabriele, has created a stylishly entertaining and informative event which celebrates this collection. Pairing specially selected English wines with canapés and a bespoke four-course menu, Signor Gabriele will introduce each of the featured vineyards. Introductions will be choreographed with a short video presentation and description of the individual wine and accompanying dish.

## GOURMET SURVIVAL CHALLENGE

Working from a crude bush kitchen with an open fire on the hotel grounds, guests will be challenged to create an extravagant meal with basic tools and simple ingredients. After receiving instructions detailing the menu, ingredients and how to prepare them, guests will set off to forage for the required items with Chewton Glen's professional forager, Jennifer Williams. Under the watchful eye of professional chefs the group will then prepare three canapés, a main course and a dessert, before sitting down at a table beneath a parachute canopy to enjoy the fruits of their labours, toasting their survival with a good glass of wine.



## FORAGING

Foraging is growing in popularity with increasing enthusiasm for gathering healthy and nutritious food from wild and natural places. The trend is particularly relevant in today's climate of unacceptable food waste and the demands from supermarkets for perfection. Add to this the current interest in creative events combining food and nature, and you have a perfect recipe for a memorable activity. In partnership with Naked Jam, the artisan producer of award-winning jams and preserves, groups can now experience bespoke foraging events at Chewton Glen. Enjoying a guided ramble tailored to the seasons, guests will explore acres of woodland and gardens with expert forager Jennifer Williams. There will be an opportunity to learn about and gather the wide range of seasonal wild foods that grow on the estate including hedgerow berries, leaves, flowers and fruits. Jennifer will then help the guests transform the day's bounty into delicious cordials and cocktails which they can take home, along with the recipes and a souvenir guide to foraging.

## GREAT CG BAKE OFF

Men and women all over the country have been inspired to reach for the oven gloves, roll up their sleeves and get baking. All the equipment and expertise will be available to help budding bakers have a go. Participants will work with a professional chef to make a variety of traditional and contemporary afternoon tea, and other bakery items. After a short demonstration the chef will challenge teams to go head-to-head to make, bake and decorate their tasty treats whilst the clock is ticking.



## CANAPÉ CAPERS

Cook up your own canapés in this tasty team-building event. In true Master Chef style, teams are provided with a variety of ingredients, and under the expert eye of the chef, must devise, design and deliver a selection of canapés within an allocated time. Cooking ability is a plus but creativity, careful planning as a team, attention to detail and the ability to remain calm under pressure are also a must for this competitive event.

## THE SWEET LIFE

Our professional chef will school you in the fine art of creating delicious artisan chocolates. Armed with your newly-found knowledge, you and your party will divide into teams and be challenged to design, and make and market your own brand of chocolates. In the style of 'The Apprentice', teams will then present their creations to "The Board" in the hope of winning the competition.



## Corporate events in The Kitchen

Experience an event like no other for up to 24 guests (9 with social distancing). Choose either a half-day or full day class from any of the formats below, and we will adjust the menu to suit your timings, requirements and number of guests. You can also enjoy a lively champagne cocktail and canapés reception with a 1-hour evening demonstration.

### JAMES MARTIN CLASSICS

Learn the tips and tricks behind classic James Martin recipes from his handpicked team... and, yes, there is butter involved in every recipe! The Kitchen's Chef Tutor will demonstrate how James cooks each recipe, then it's down to you or your team to see how close you can get to Mr Martin's exacting standards. You can choose from a quick-fire 1-hour experience, a half-day or even a full day recreating James' most loved recipes. For that competitive edge, each dish will be judged for an overall winner of the coveted "I cook like James" title. And for those who think they're a whizz in the kitchen (or not!), we can set up your very own Omelette Challenge!

### EXAMPLE MENU CHOICES

- White chocolate and whisky croissant butter pudding
- Classic chocolate éclairs
- Sticky toffee pudding with toffee sauce
- Raspberry mille-feuille with vanilla cream
- Puff pastry stacks - suitable for 1-hour class
- Omelette Challenge - suitable for 1-hour class







Nearby venues



#### BEAULIEU: National Motor Museum and Palace House

In an idyllic New Forest setting, overlooking the picturesque Beaulieu River millpond, Palace House on the Beaulieu estate was remodeled and extended during the 1800s and is now a fine example of a Victorian country house. Inside, its ecclesiastical heritage sets the grand gothic tone for a home bristling with character and adorned with family treasures, portraits and memorabilia. Also on the estate, the National Motor Museum at Beaulieu boasts one of the finest collections of cars, motorcycles and motoring memorabilia in the world, from the earliest motor carriages to classic family saloons. Located in the New Forest just 25 minutes from Chewton Glen, both venues are ideal for private hospitality.



#### SOMERLEY

Set in a private 7,000-acre estate this beautiful stately home, designed by Samuel Wyatt in 1750, has been in the Normanton family for five generations since it was bought by the 2nd earl in 1825. The current custodian of Somerley, Lord Somerton, will open the house for exclusive use for corporate hospitality offering total privacy within the gracious surroundings of the State Rooms and Gallery which are filled with spectacular paintings and antique porcelain.



#### HIGHCLIFFE CASTLE

Situated on the cliffs at Highcliffe, 5-minutes from Chewton Glen, Highcliffe Castle was built in Gothic Revival style in 1835 by Charles Stuart, 1st Baron Stuart de Rothesay. It has been described as the most important surviving example of this romantic and picturesque style of architecture. Over the years the castle has been home to many notable tenants including American-born retail entrepreneur Harry Gordon Selfridge. Highcliffe Castle can accommodate a variety of events in its characterful rooms which include the extraordinary Great Hall with its 30ft high stained glass Jessie Window; the State Dining Room with its full-length windows and spectacular views of the sea and the Isle of Wight; and the Wintergarden, a light and airy conservatory-style room with views across the grounds.

# Truly gifted

Guests treasure happy memories of Chewton Glen, and the hotel's Boutique features an exclusive line of speciality gifts that will keep the memories alive. From luxurious robes to whimsical teddys the collection offers an assortment of indulgent treats and distinctive mementos.



## To book

If you would like further information or would like to book a truly exceptional corporate event or team activity, please drop us a line and our team will be happy to assist.

### CONTACT

sales@chewtonglen.com  
or call us on 01425 282212

CHEWTON  GLEN  
HAMPSHIRE

New Forest | Hampshire | BH25 6QS

Telephone: 01425 282212

[sales@chewtonglen.com](mailto:sales@chewtonglen.com)

[CHEWTONGLEN.COM](http://CHEWTONGLEN.COM)